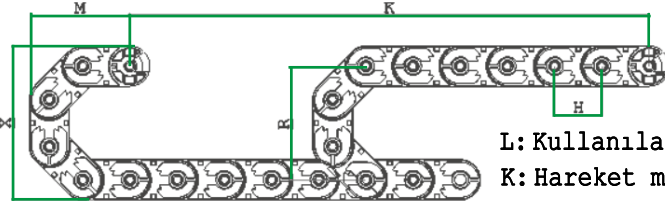


ÜRÜN KODU	İÇ YÜKSEKLİK -A-	İÇ GENİŞLİK -B-	DIŞ YÜKSEKLİK -C-	DIŞ GENİŞLİK -D-	KIVRILMA YARI ÇAPI RADIÜS -R-
30X25 A	30	25	40	41	50-70-75-100
30X40 A	30	40	40	56	50-70-75-100
30X60 A	30	60	40	76	50-70-75-100
30X80 A	30	80	40	98	50-70-75-100

KIVRILMA YARI ÇAPI RADIÜS -R-	X ÖLÇÜSÜ (mm)	MAX KABLO ÇAP (mm)
50	140	28
70	180	28
75	190	28
100	240	28



L: Kullanılacak miktar

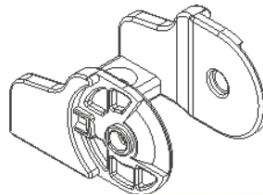
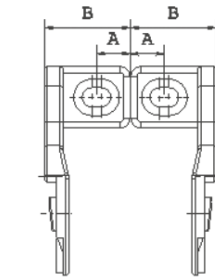
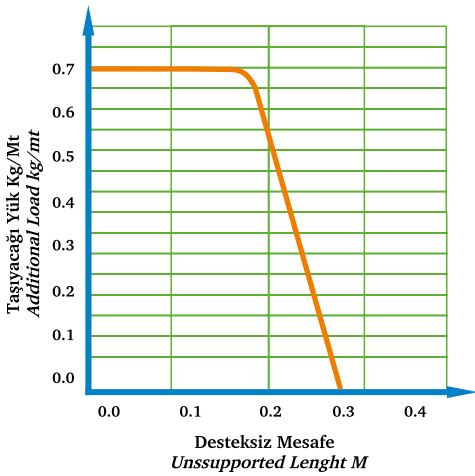
K: Hareket mesafesi

Y: Radius açılımı

$$L: \frac{K}{2} + Y$$

2

H: 50 mm

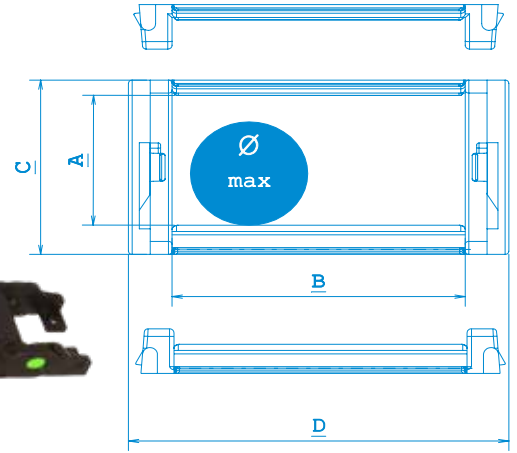


MODEL	A	B
HKT 30X25	-	-
HKT 30X40	11	28
HKT 30X60	21	38
HKT 30X80	31	48

*HKT 30X25 SERİMİZDE ÇELİK BAĞLANTI AYIĞI TAVSİYE EDİLMEKTEDİR.

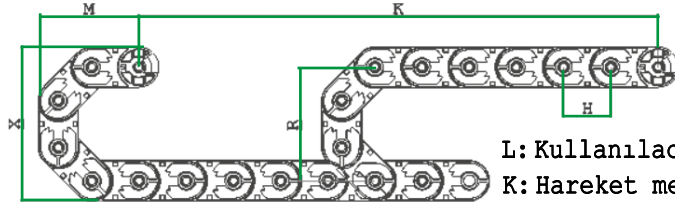
*TÜM ÜRÜNLERİMİZDE ÇELİK BAĞLANTI AYIĞI KULLANILABİLMEKTEDİR.





ÜRÜN KODU	İÇ YÜKSEKLİK -A-	İÇ GENİŞLİK -B-	DIŞ YÜKSEKLİK -C-	DIŞ GENİŞLİK -D-	KIVRILMA YARI ÇAPI RADIUS -R-
30X40 YA	30	40	40	56	70-75-100
30X60 YA	30	60	40	76	70-75-100

KIVRILMA YARI ÇAPI RADIUS -R-	X ÖLÇÜSÜ (mm)	MAX KABLO ÇAPI(mm)
70	180	28
75	190	28
100	240	28



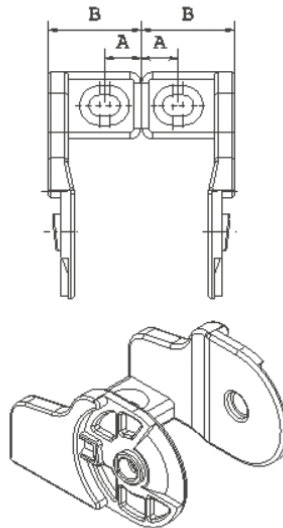
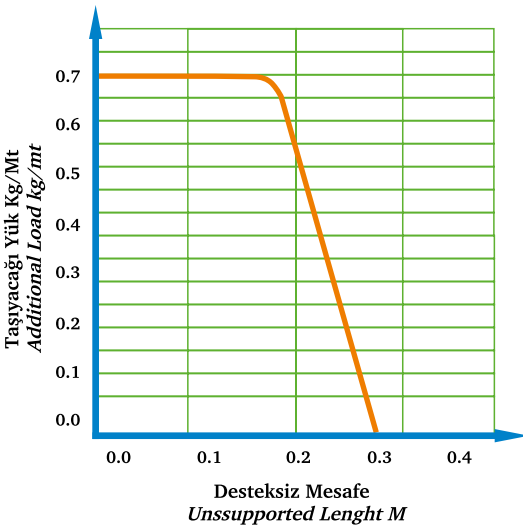
L: Kullanılacak miktar

K: Hareket mesafesi

Y: Radius açılımı

$$L = \frac{K}{2} + Y$$

H: 50 mm

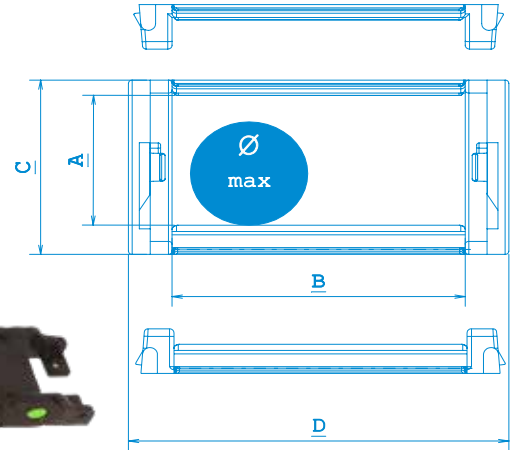


MODEL	A	B
HKT 30X25	-	-
HKT 30X40	11	28
HKT 30X60	21	38
HKT 30X80	31	48

*HKT 30X25 SERİMİZDE ÇELİK BAĞLANTI AYAĞI TAVSİYE EDİLMEKTEDİR.

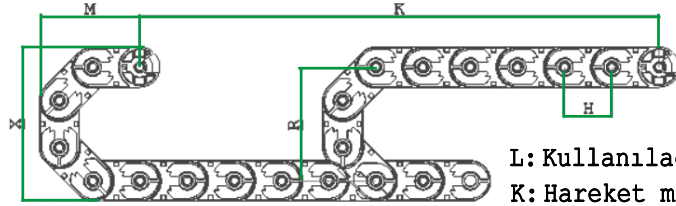
*TÜM ÜRÜNLERİMİZDE ÇELİK BAĞLANTI AYAĞI KULLANILABİLMEKTEDİR.





ÜRÜN KODU	İÇ YÜKSEKLİK -A-	İÇ GENİŞLİK -B-	DIŞ YÜKSEKLİK -C-	DIŞ GENİŞLİK -D-	KIVRILMA YARI ÇAPI RADIUS -R-
30X40 K	30	40	40	56	70-75-100
30X60 K	30	60	40	76	70-75-100

KIVRILMA YARI ÇAPI RADIUS -R-	X ÖLÇÜSÜ (mm)	MAX KABLO ÇAPI(mm)
70	180	28
75	190	28
100	240	28



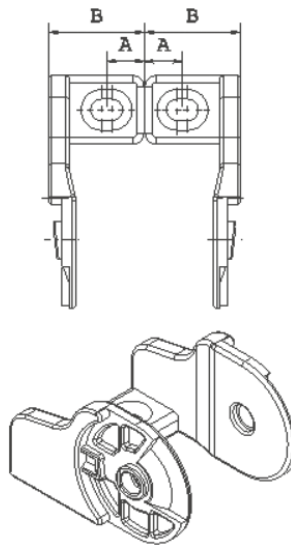
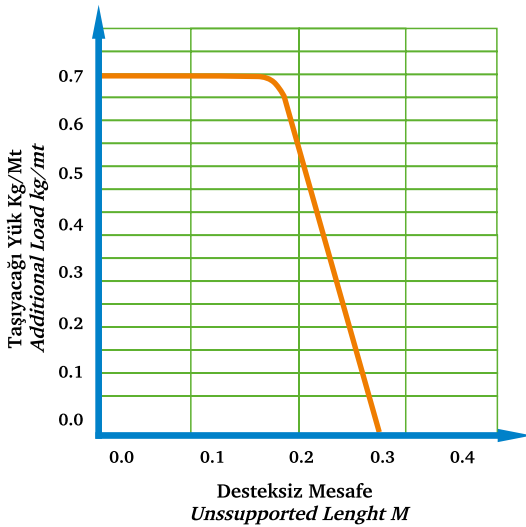
L: Kullanılacak miktar

K: Hareket mesafesi

Y: Radius açılımı

$$L: \frac{K}{2} + Y$$

H: 50 mm



MODEL	A	B
HKT 30X25	-	-
HKT 30X40	11	28
HKT 30X60	21	38
HKT 30X80	31	48

*HKT 30X25 SERİMİZDE ÇELİK BAĞLANTI AYAĞI TAVSİYE EDİLMEKTEDİR.

*TÜM ÜRÜNLERİMİZDE ÇELİK BAĞLANTI AYAĞI KULLANILABİLMEKTEDİR.

